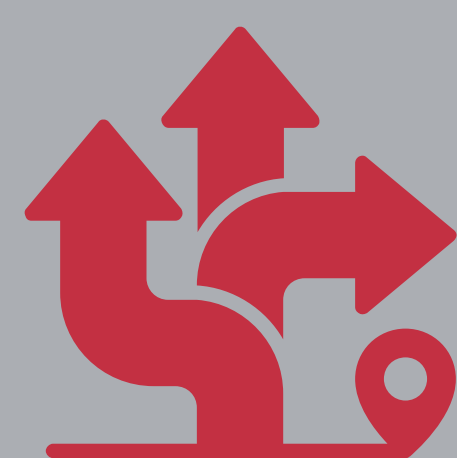


HWDSB OPTION A (formerly Option 2)

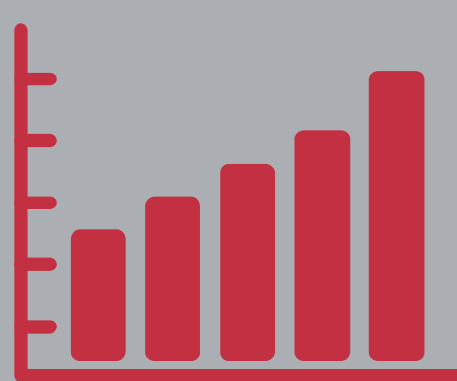
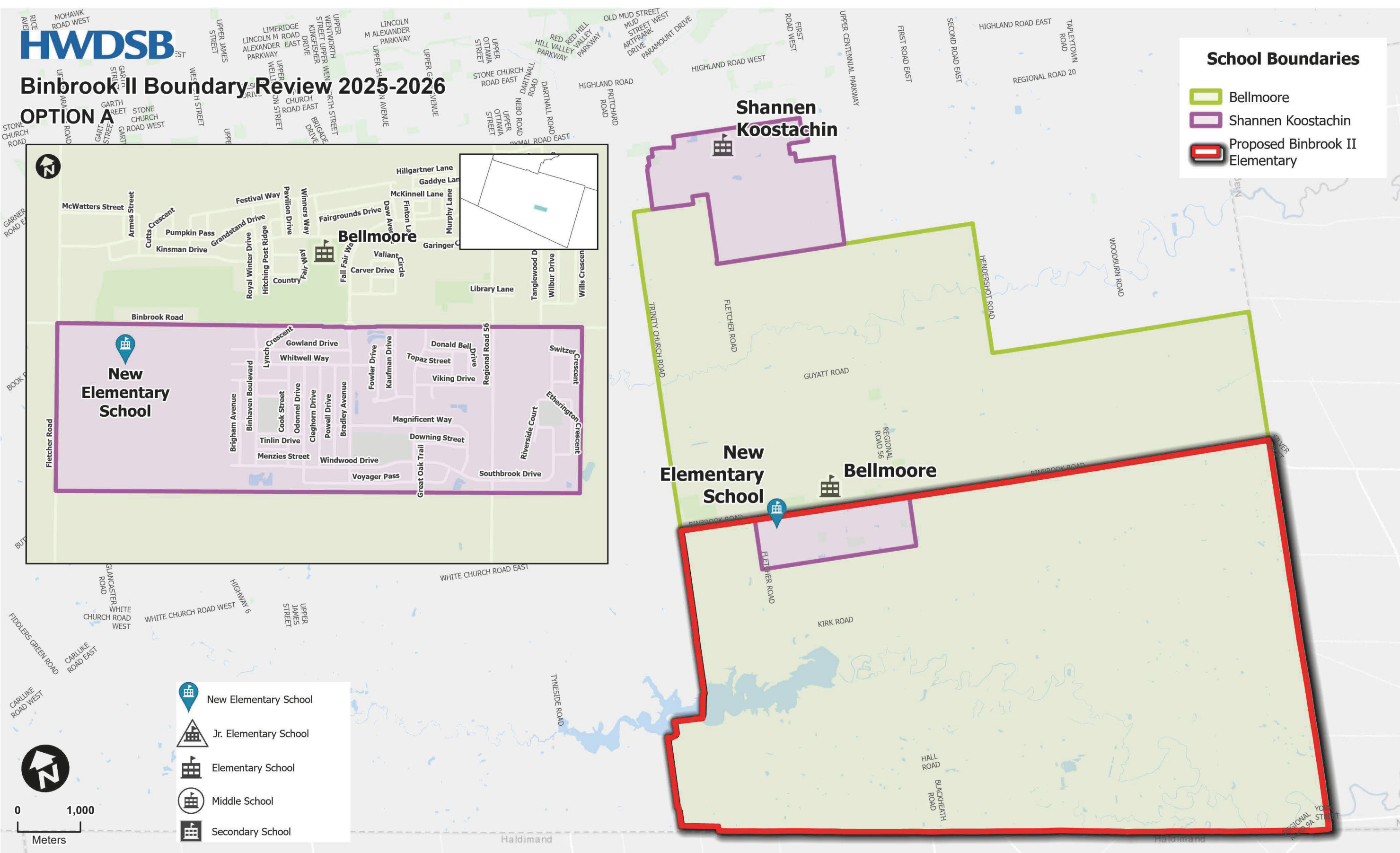
BINBROOK II BOUNDARY REVIEW



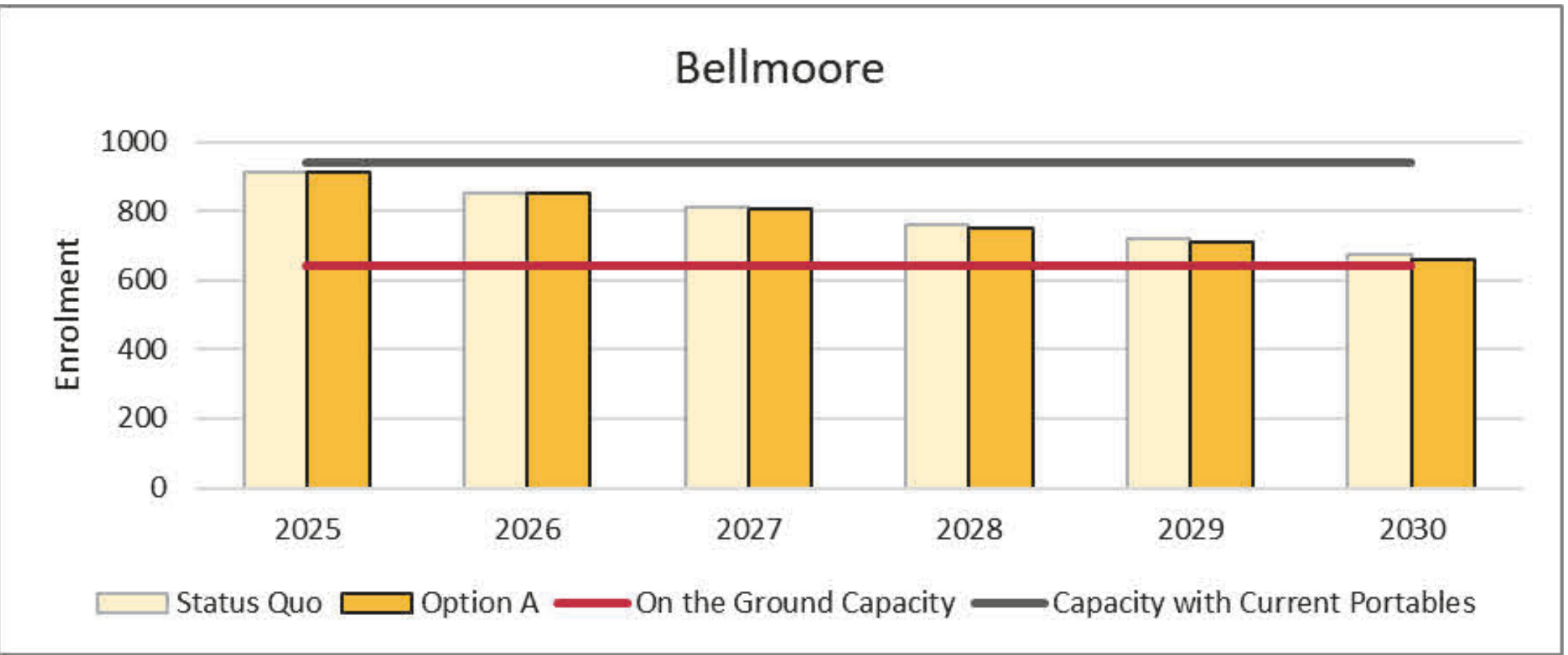
OPTION DETAILS

2027-2028

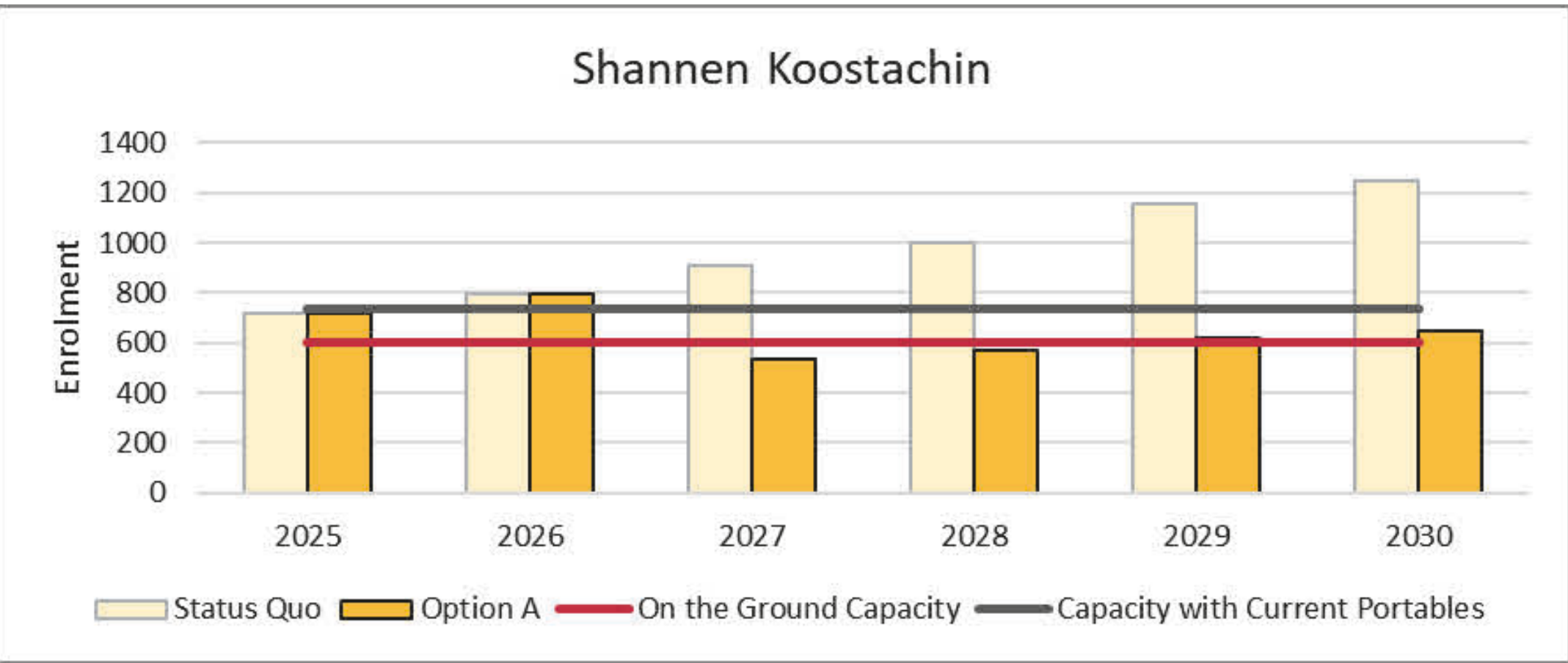
- All Bellmoore students north of Binbrook Rd in its existing boundary remain at Bellmoore.
- Existing Bellmoore students in holding area remain at Bellmoore.
- All new students south of Binbrook Rd attend new school.
- Shannen Koostachin students in holding area are assigned to new school.
- Legacy families wishing to remain at current school will not be provided transportation.



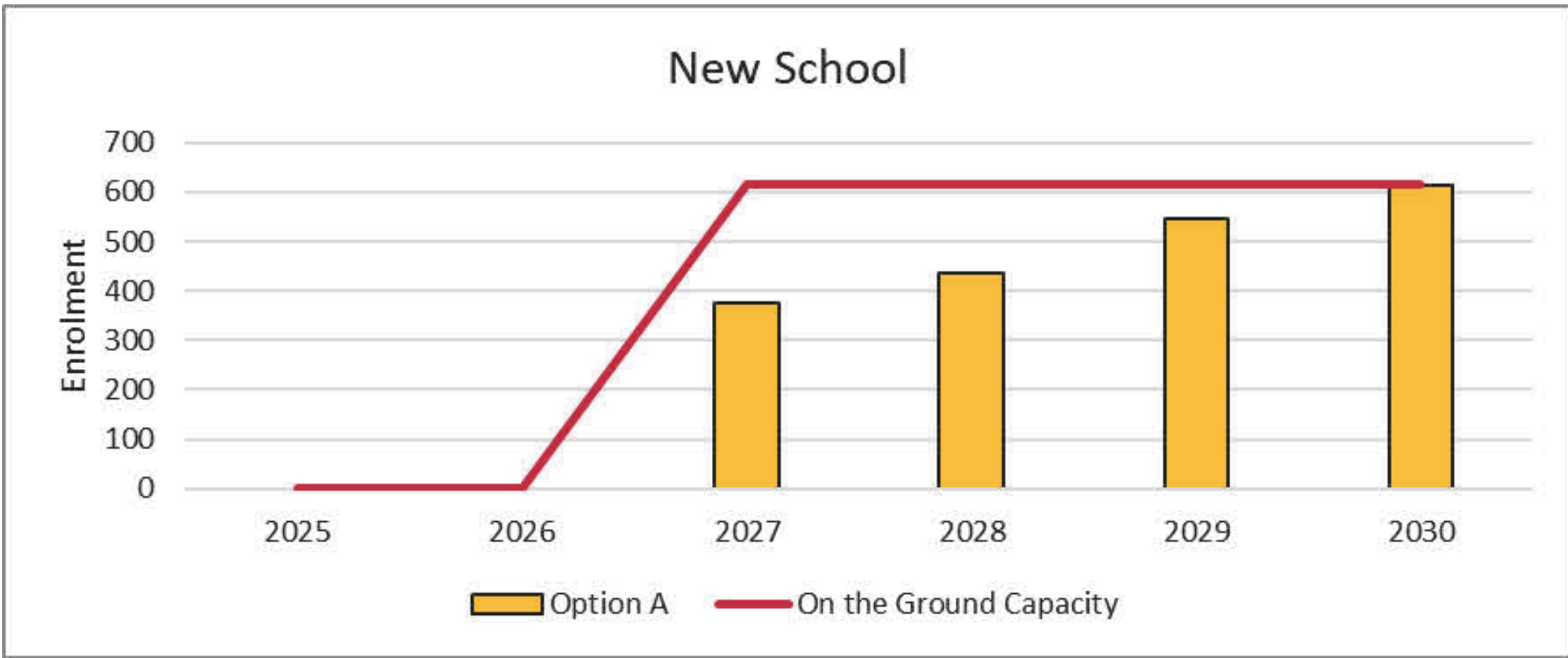
OPTION ENROLMENT PROJECTIONS



On the Ground Capacity	Portables	Total Capacity	Program	2025	2026	2027	2028	2029	2030
640	13	939	English	914	850	806	750	708	659
	Portable Capacity: 299								
Utilization				143%	133%	126%	117%	111%	103%
Utilization with Portables				97%	91%	86%	80%	75%	70%



On the Ground Capacity	Portables	Total Capacity	Program	2025	2026	2027	2028	2029	2030
599	6	737	English	720	798	535	573	619	649
	Portable Capacity: 138								
Utilization				120%	133%	89%	96%	103%	108%
Utilization with Portables				98%	108%	73%	78%	84%	88%



On the Ground Capacity	Portables	Total Capacity	Program	2025	2026	2027	2028	2029	2030
615	0	615	English	0	0	374	438	546	615
	Portable Capacity: 0								
Utilization				0%	0%	61%	71%	89%	100%
Utilization with Portables				0%	0%	61%	71%	89%	100%