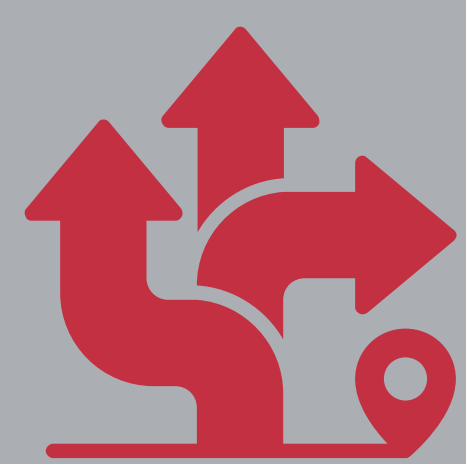


HWDSB OPTION B (formerly Option 4)

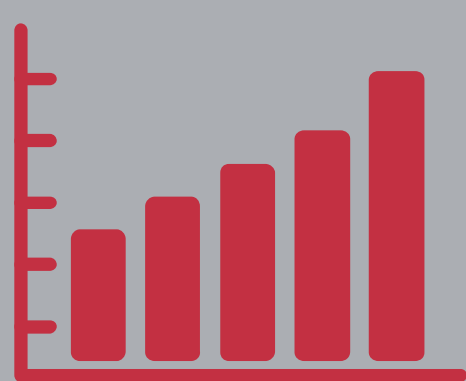
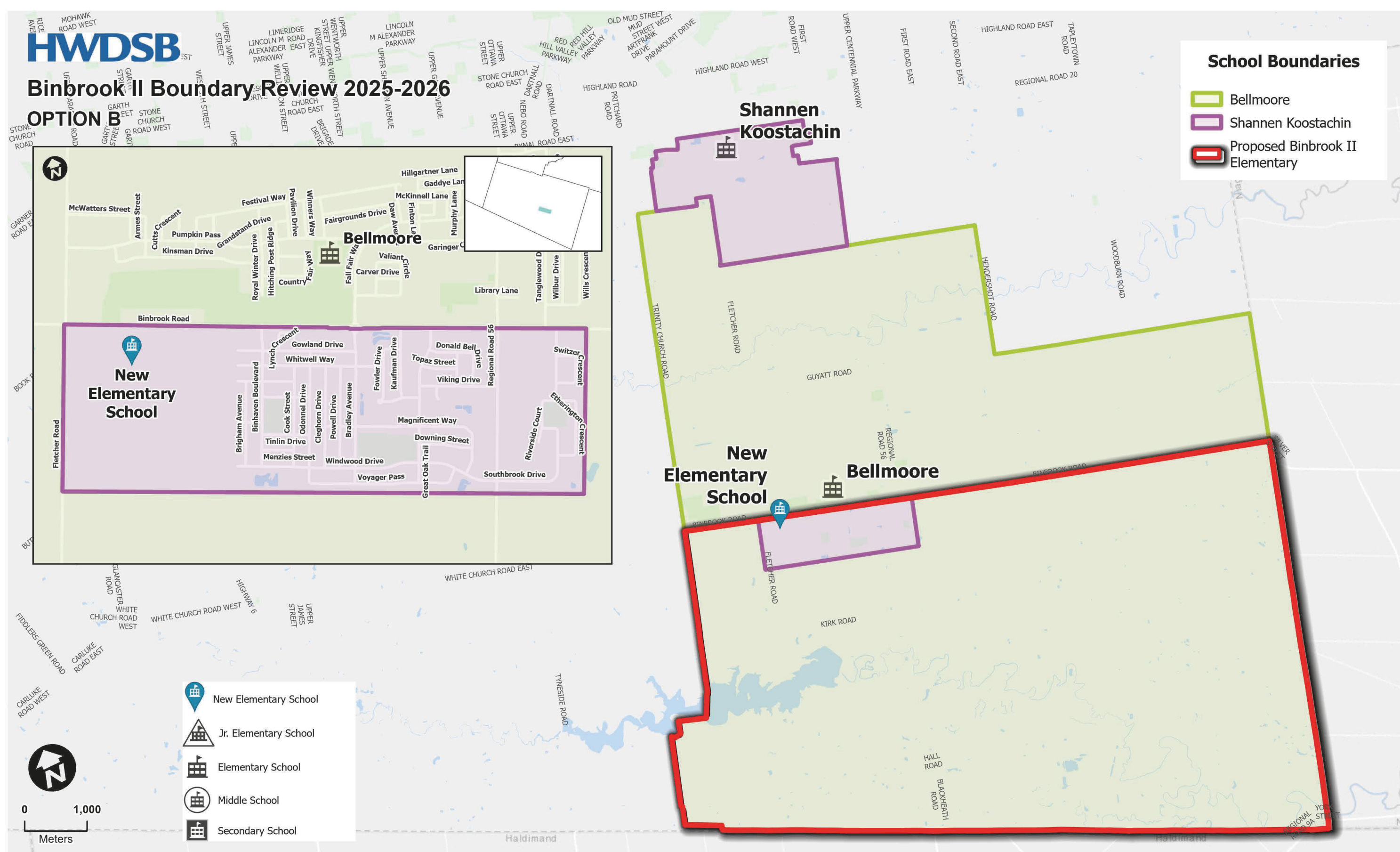
BINBROOK II BOUNDARY REVIEW



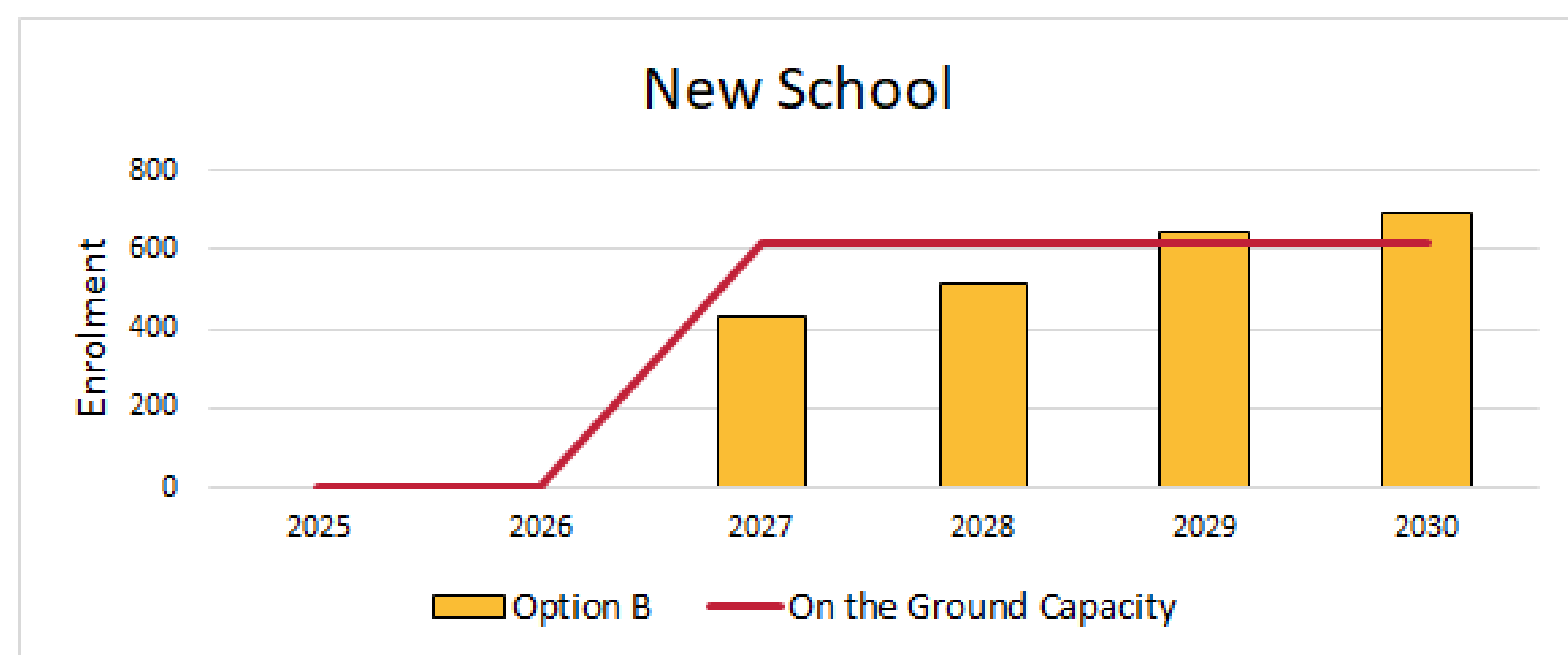
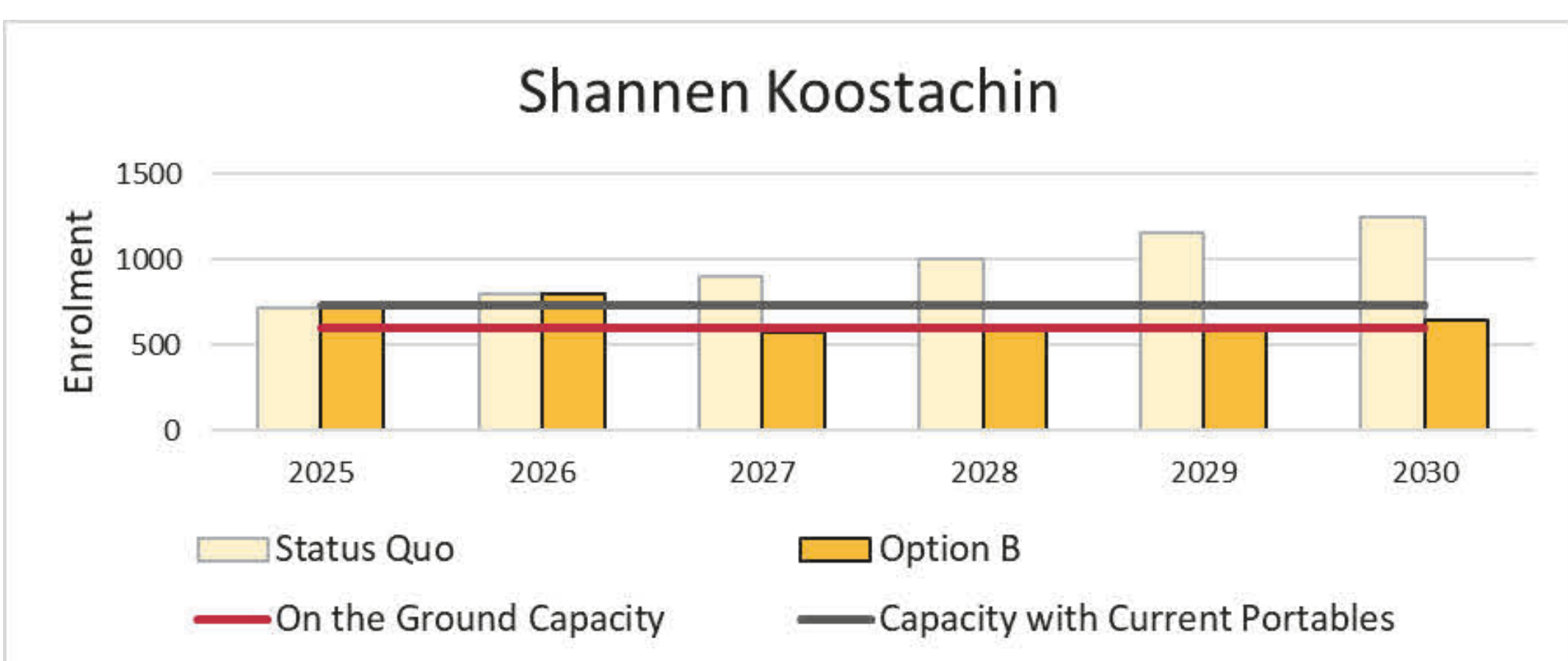
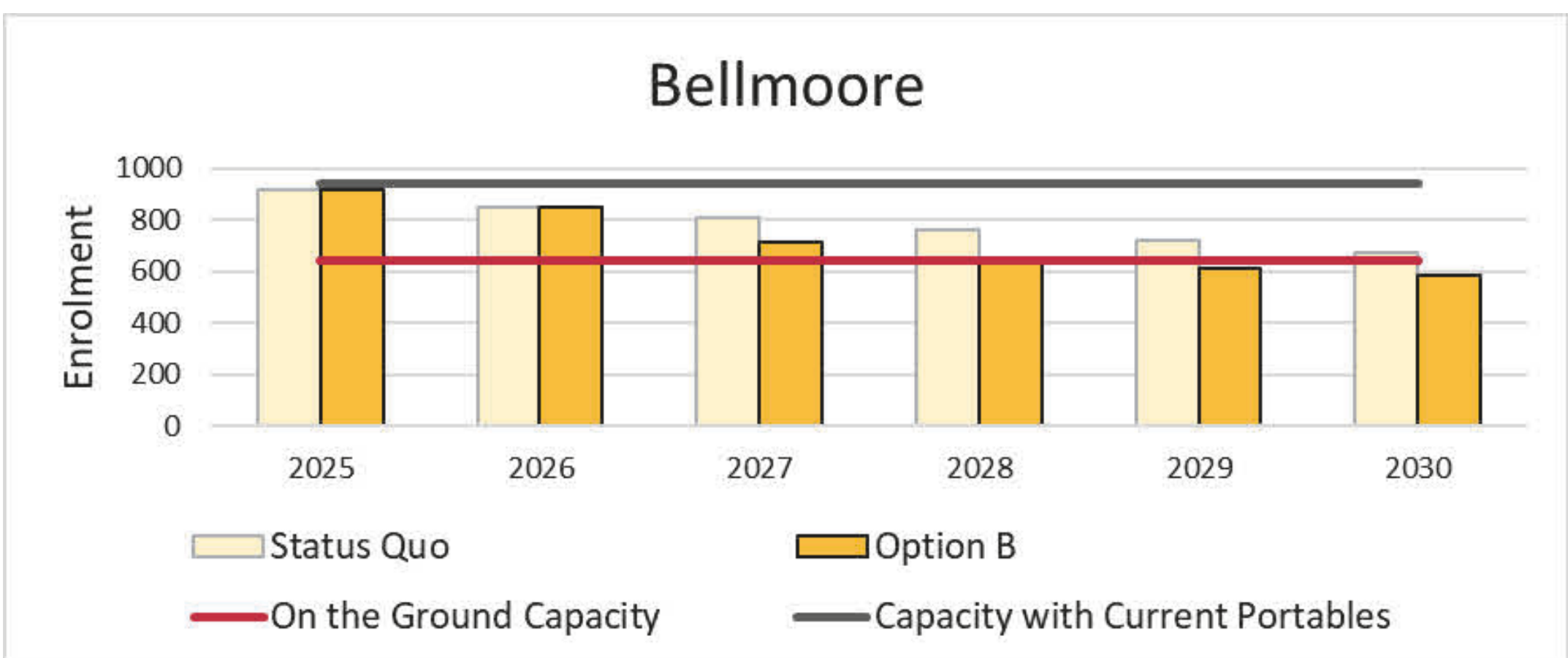
OPTION DETAILS

2027-2028

- All Bellmoore students north of Binbrook Rd in its existing boundary area assigned to Bellmoore.
- All existing Bellmoore students south of Binbrook Rd (except grade 7&8 legacy students) and new students south of Binbrook Rd assigned to the new school
- Legacy grade 7&8 Bellmoore students south of Binbrook Rd attend Bellmoore
- Shannen Koostachin students in holding area assigned to new school except grade 7&8 legacy students.
- Legacy families wishing to remain at current school will not be provided transportation.



OPTION ENROLMENT PROJECTIONS



On the Ground Capacity	Portables	Total Capacity	Program	2025	2026	2027	2028	2029	2030
640	13	939	English	914	850	711	653	609	586
Utilization				143%	133%	111%	102%	95%	91%
Utilization with Portables				97%	91%	76%	70%	65%	62%

On the Ground Capacity	Portables	Total Capacity	Program	2025	2026	2027	2028	2029	2030
640	13	939	English	720	798	576	595	619	649
Utilization				120%	133%	96%	99%	103%	108%
Utilization with Portables				98%	108%	78%	81%	84%	88%

On the Ground Capacity	Portables	Total Capacity	Program	2025	2026	2027	2028	2029	2030
615	0	615	English	0	0	428	513	645	688
Utilization				0%	0%	70%	83%	105%	112%
Utilization with Portables				0%	0%	70%	83%	105%	112%