

# HWDSB SCHOOL INFORMATION

## AREA SCHOOLS INFORMATION SHEETS



### Allan A. Greenleaf

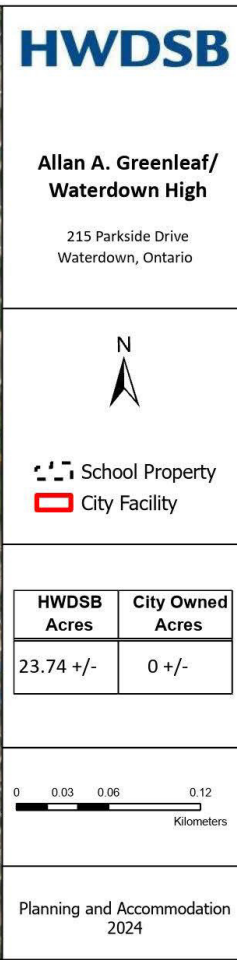
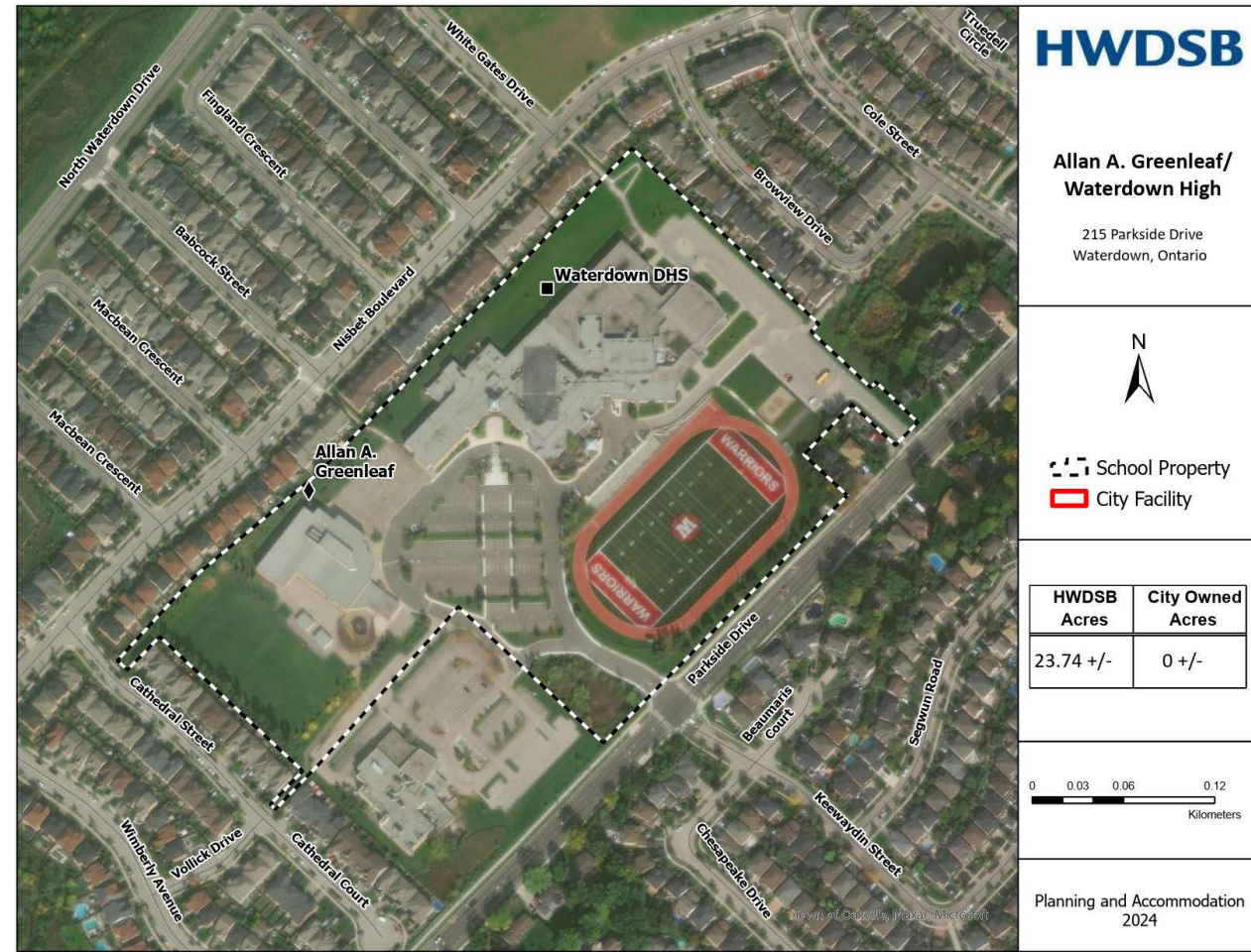
**Address:** 215 Parkside Drive  
**City:** Waterdown  
**Year Built:** 2000  
**Bell Time:** 9:15 AM - 3:35 PM  
**Postal Code:** L8B 1B9  
**OTG\*:** 548

**Site Size:** 23.74 Acres  
**Building sq ft:** 64723.33  
**Site Portable Capacity\*\*:** 9  
**Portable Count:** 8  
**Portable Capacity:** 184 pupils  
**Total Capacity:** 732 pupils  
**Available Programs:** English  
**Grade Configuration:** JK - 8  
**French Immersion:** N/A

**Before and After Care Program Provider:** YMCA Child Care

**Building/Amenity Partners:** None

Enrollment Projections:																
Allan A. Greenleaf	JK	SK	01	02	03	04	05	06	07	08	Total	Utilization	Utilization with Portables			
2021	68	63	53	74	58	60	65	60	50	56	607	111%	100%			
2022	51	68	55	56	74	57	65	61	66	56	609	111%	99%			
2023	62	56	55	54	58	72	57	66	61	64	605	110%	98%			
2024	105	77	57	62	57	67	76	66	69	70	706	129%	100%			
2025	111	108	69	61	66	62	72	84	71	71	775	141%	100%			
2026	110	114	94	71	63	68	64	74	86	73	819	149%	112%			
2027	111	111	98	95	72	64	69	65	75	87	848	155%	116%			
2028	111	116	100	103	101	78	70	75	71	81	905	165%	124%			
2029	111	118	107	107	111	108	85	77	82	78	985	180%	135%			
2030	118	118	110	114	114	118	115	92	84	89	1073	196%	147%			



\*OTG: On The Ground Capacity: Ministry of Education rated built capacity of a school building.  
\*\*Site Portable Capacity: Number of portables the school site can generally accommodate without capital investment and improvements.



### Guy B. Brown Elementary School

**Address:** 55 Braehed Avenue  
**City:** Waterdown  
**Year Built:** 2011  
**Bell Time:** 8:35 AM - 2:55 PM  
**Postal Code:** L8B 0C5  
**OTG\*:** 632

**Site Size:** 5.00 Acres  
**Building sq ft:** 65783.57  
**Site Portable Capacity\*\*:** 8  
**Portable Count:** 5  
**Portable Capacity:** 115 pupils  
**Total Capacity:** 747 pupils  
**Available Programs:** English, French Immersion  
**Grade Configuration:** JK - 8  
**French Immersion:** Gr. 1-8

**Before and After Care Program Provider:** Waterdown Children's Centre

**Building/Amenity Partners:** Guy Brown Park

Enrollment Projections:																
Guy B. Brown	JK	SK	01	02	03	04	05	06	07	08	Total	Utilization	Utilization with Portables			
2021	61	56	24	24	21	21	21	21	21	21	252	100%	95%			
2022	61	56	24	24	21	21	21	21	21	21	252	100%	95%			
2023	61	56	24	24	21	21	21	21	21	21	252	100%	95%			
2024	61	56	24	24	21	21	21	21	21	21	252	100%	95%			
2025	61	56	24	24	21	21	21	21	21	21	252	100%	95%			
2026	61	56	24	24	21	21	21	21	21	21	252	100%	95%			
2027	61	56	24	24	21	21	21	21	21	21	252	100%	95%			
2028	61	56	24	24	21	21	21	21	21	21	252	100%	95%			
2029	61	56	24	24	21	21	21	21	21	21	252	100%	95%			
2030	61	56	24	24	21	21	21	21	21	21	252	100%	95%			



\*OTG: On The Ground Capacity: Ministry of Education rated built capacity of a school building.  
\*\*Site Portable Capacity: Number of portables the school site can generally accommodate without capital investment and improvements.



### Balaclava Elementary School

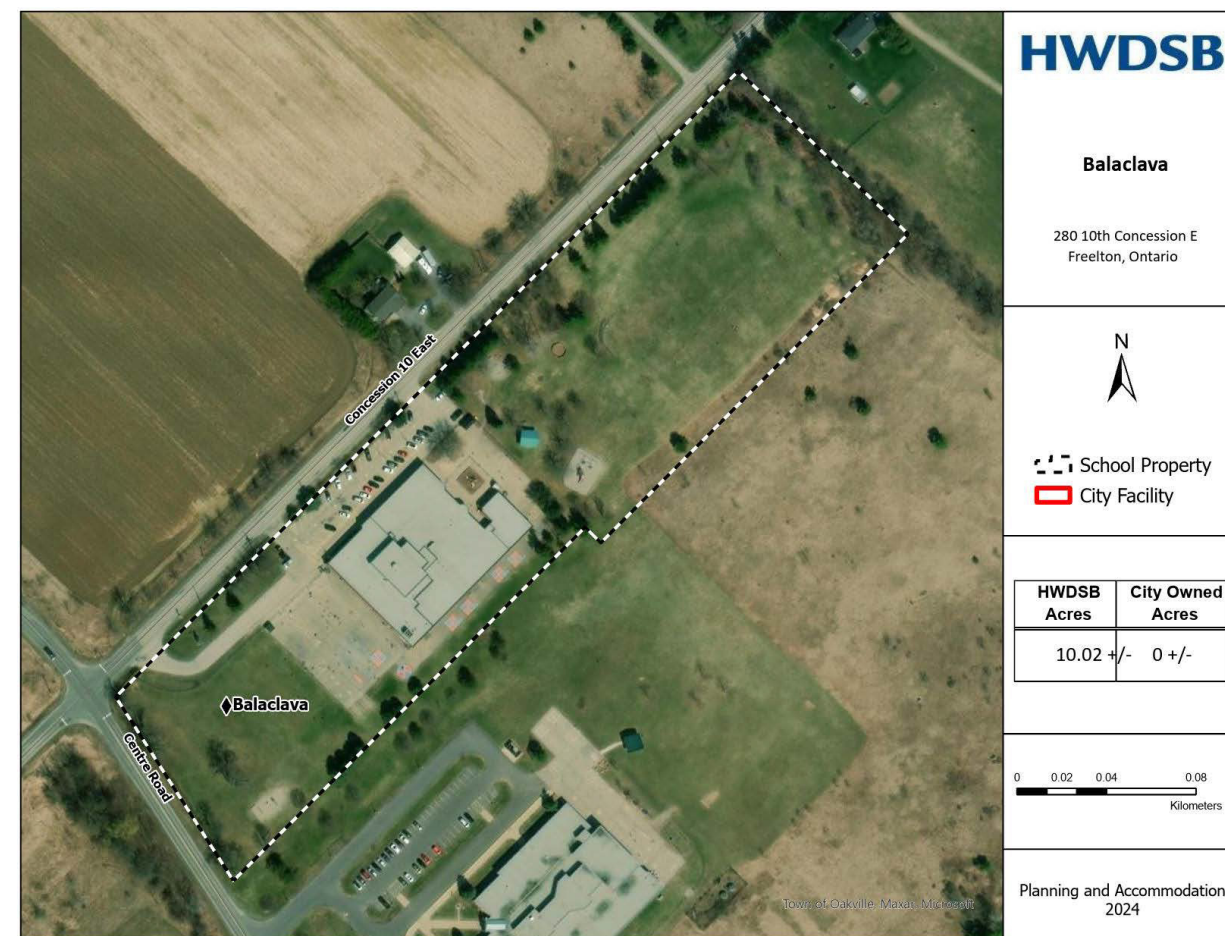
**Address:** 280 10th Concession  
**City:** Freeton  
**Year Built:** 1989  
**Bell Time:** 9:15 AM - 3:35 PM  
**Postal Code:** L8B 1H6  
**OTG\*:** 381

**Site Size:** 10.02 Acres  
**Building sq ft:** 38599.35  
**Site Portable Capacity\*\*:** 6  
**Portable Count:** 0  
**Portable Capacity:** 0 pupils  
**Total Capacity:** 381 pupils  
**Available Programs:** English  
**Grade Configuration:** JK - 8  
**French Immersion:** N/A

**Before and After Care Program Provider:** Umbrella Child

**Building/Amenity Partners:** None

Enrollment Projections:																
Balaclava	JK	SK	01	02	03	04	05	06	07	08	Total	Utilization	Utilization with Portables			
2021	38	26	40	31	26	36	29	36	38	37	337	88%	88%			
2022	27	41	27	43	32	29	36	34	35	37	341	90%	90%			
2023	25	24	36	26	44	31	31	37	37	35	326	86%	86%			
2024	29	26	22	33	26	43	30	32	35	37	313	82%	82%			
2025	19	31	27	24	37	26	46	32	32	38	312	82%	82%			
2026	24	19	31	27	24	37	26	46	33	32	300	79%	79%			
2027	26	24	19	31	27	24	37	26	47	33	296	78%	78%			
2028	27	27	24	20	31	27	24	37	26	47	291	76%	76%			
2029	27	28	27	25	20	31	28	24	37	26	272	71%	71%			
2030	27	28	28	27	25	20	32	28	24	37	274	72%	72%			



\*OTG: On The Ground Capacity: Ministry of Education rated built capacity of a school building.  
\*\*Site Portable Capacity: Number of portables the school site can generally accommodate without capital investment and improvements.



### Flamborough Centre Elementary School

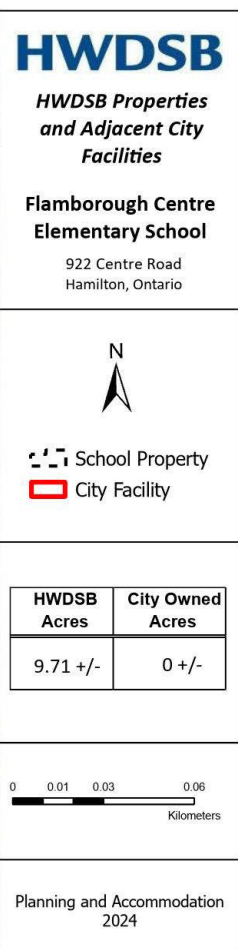
**Address:** 922 Centre Road  
**City:** Waterdown  
**Year Built:** 1953, 1960, 1969 (Additions)  
**Bell Time:** 8:20 AM - 2:40 PM  
**Postal Code:** L8B 1M4  
**OTG\*:** 243

**Site Size:** 9.71 Acres  
**Building sq ft:** 35510.11  
**Site Portable Capacity\*\*:** 11  
**Portable Count:** 7  
**Portable Capacity:** 161 pupils  
**Total Capacity:** 404 pupils  
**Available Programs:** English  
**Grade Configuration:** JK - 8  
**French Immersion:** N/A

**Before and After Care Program Provider:** None

**Building/Amenity Partners:** None

Enrollment Projections:																
Flamborough Centre	JK	SK	01	02	03	04	05	06	07	08	Total	Utilization	Utilization with Portables			
2021	9	7	15	7	16	8	14	68	50	70	289	102%	65%			
2022	9	7	15	7	16	8	14	68	50	70	289	102%	65%			
2023	9	7	15	7	16	8	14	68	50	70	289	102%	65%			
2024	9	7	15	7	16	8	14	68	50	70	289	102%	65%			
2025	9	7	15	7	16	8	14	68	50	70	289	102%	65%			
2026	9	7	15	7	16	8	14	68	50	70	289	102%	65%			
2027	9	7	15	7	16	8	14	68	50	70	289	102%	65%			
2028	9	7	15	7	16	8	14	68	50	70	289	102%	65%			
2029	9	7	15	7	16	8	14	68	50	70	289	102%	65%			
2030	9	7	15	7	16	8	14	68	50	70	289	102%	65%			



\*OTG: On The Ground Capacity: Ministry of Education rated built capacity of a school building.  
\*\*Site Portable Capacity: Number of portables the school site can generally accommodate without capital investment and improvements.



### Mary Hopkins Elementary School

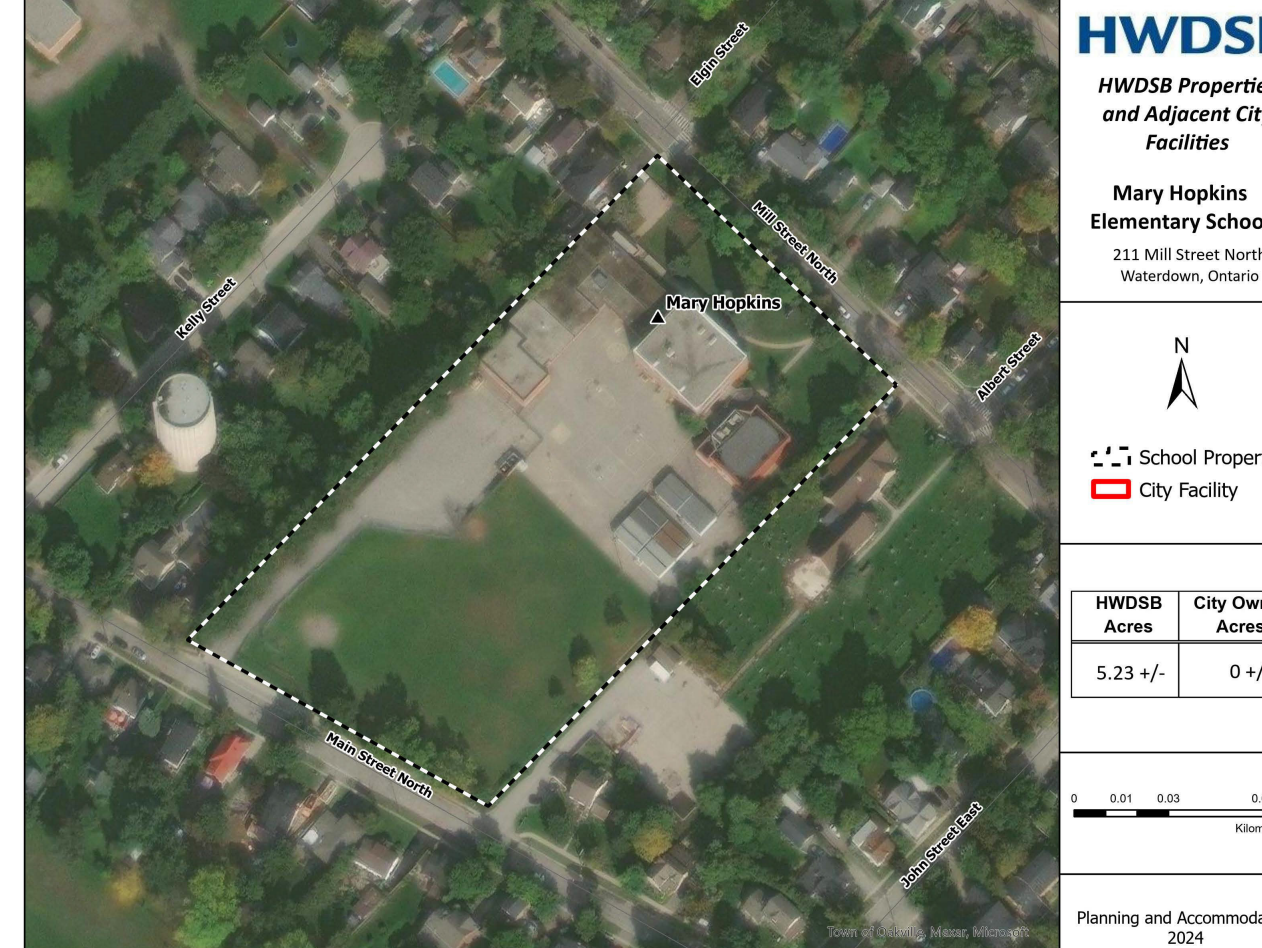
**Address:** 211 Mill Street North  
**City:** Waterdown  
**Year Built:** 1920, 1953, 1968, 1994, 2013 (Additions)  
**Bell Time:** 9:15 AM - 3:35 PM  
**Postal Code:** L8R 2H0  
**OTG\*:** 401

**Site Size:** 5.23 Acres  
**Building sq ft:** 44724  
**Site Portable Capacity\*\*:** 12  
**Portable Count:** 5  
**Portable Capacity:** 115 pupils  
**Total Capacity:** 516 pupils  
**Available Programs:** English, French Immersion  
**Grade Configuration:** JK - 4  
**French Immersion:** Gr. 1-4

**Before and After Care Program Provider:** Waterdown Children's Centre

**Building/Amenity Partners:** None

Enrollment Projections:																
Mary Hopkins	JK	SK	01	02	03	04	05	06	07	08	Total	Utilization	Utilization with Portables			
2021	41	37	27	24	21	21	21	21	21	21	252	100%	95%			
2022	41	37	27	24	21	21	21	21	21	21	252	100%	95%			
2023	41	37	27	24	21	21	21	21	21	21	252	100%	95%			
2024	41	37	27	24	21	21	21	21	21	21	252	100%	95%			
2025	41	37	27	24	21	21	21	21	21	21	252	100%	95%			
2026	41	37	27	24	21	21	21	21	21	21	252	100%	95%			
2027	41	37	27	24	21	21	21	21	21	21	252	100%	95%			
2028	41	37	27	24	21	21	21	21	21	21	252	100%	95%			
2029	41	37	27	24	21	21	21	21	21	21	252	100%	95%			
2030	41	37	27	24	21	21	21	21	21	21	252	100%	95%			



\*OTG: On The Ground Capacity: Ministry of Education rated built capacity of a school building.  
\*\*Site Portable Capacity: Number of portables the school site can generally accommodate without capital investment and improvements.

BE YOU. BE EXCELLENT.